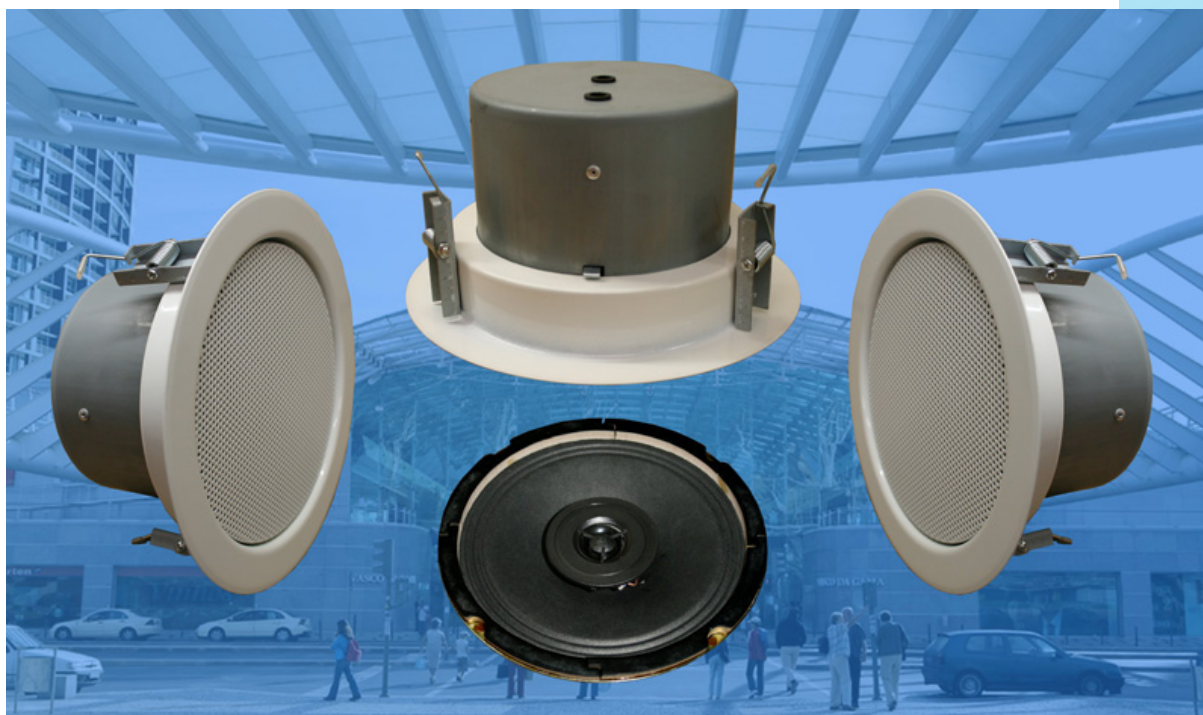


HAUT-PARLEUR PLAFOND CLB-220FT/10W-II/EN5424 METAL



C
L
B

220FT

10W

II
VOIES

EN
5424

- HP A 2 VOIES REpond PARFAITEMENT A UNE SONORISATION EXIGEANT
- ANTIFEU
- MONTAGE FACILE GRACE AUN SYSTEME DE RESSORT A CLIP
- 50-HZ-TRANSFO STABLE
- ADAPTATION 100-V PROTEGEE
- VERSION AVEC BORNIER CERAMIQUE ET THERMO-FUSIBLE LIVRABLE EN OPTION
- HP EN-5424 NORME DIN-18032-III ANTI-CHOC SALLES DE SPORTS

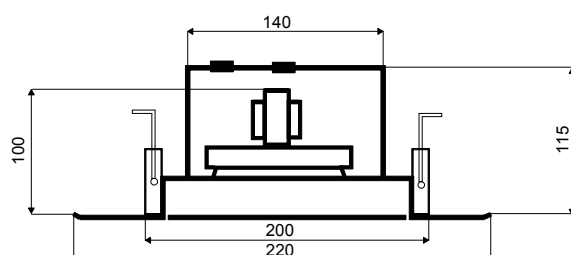
- VERSION EN-5424 AVEC CAPOT ANTIFEU CERTIFIEE:
NUMERO COMMANDE:

CLB-220FT-10W-II/EN-5424
NR-CERTIFICAT: 1293-CPD-0310

CARACTÉRISTIQUES TECHNIQUES:

CLB-220FT/10W-II/EN5424

Haut-parleurs:	10/15W - 2 VOIES
Ligne 100V:	10-5-2,5W
Bande passante:	70 – 20.000 Hz
EN-Sensibilité 1W/4M:	80 dB
Pression acoustique max 10W/4M:	91 dB
Pression acoustique 1W/1M max EASE/Ulysses:	102 dB (3,1 KHz)
Pression acoustique 10W/1M max EASE/Ulysses:	112 dB (3,1 KHz)
Angle d'ouverture H (0,5/1/2/4 KHz):	180°/180°/126°/66°
Angle d'ouverture V (0,5/1/2/4 KHz):	180°/180°/126°/66°
Dimensions:	220 mm x 115 mm
Encastrement:	200 mm
Poids:	1,6 kg
Couleur:	blanc



EN-5424-PAGE-6-A

H
A
U
T
P
A
R
L
E
U
R

P
L
A
F
O
N
D

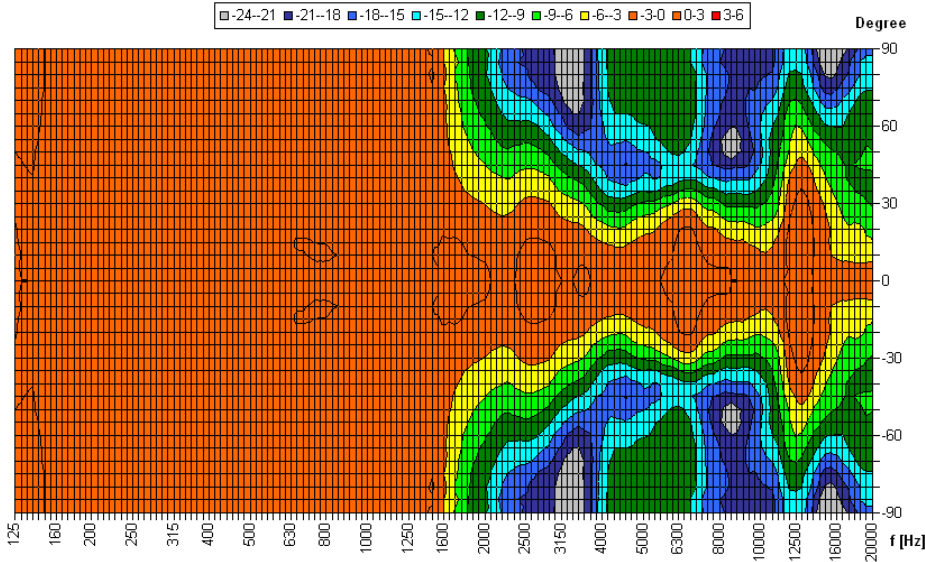
ANGLE D'OUVERTURE HP PLAFOND CLB-220FT/10W-II/EN5424

Proc. de mesure	Axe	500Hz	1000Hz	2000Hz	4000Hz
EN5424	HOR	180°	180°	126°	66°
EN5424	VER	180°	180°	126°	66°
EASE/ULYSSES	HOR	180°	180°	90°	50°
EASE/ULYSSES	VER	180°	180°	90°	50°

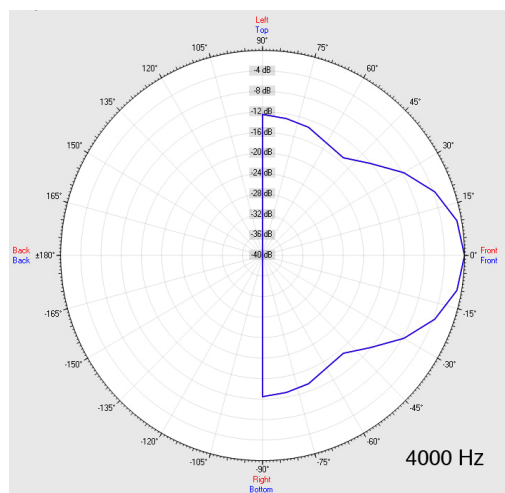
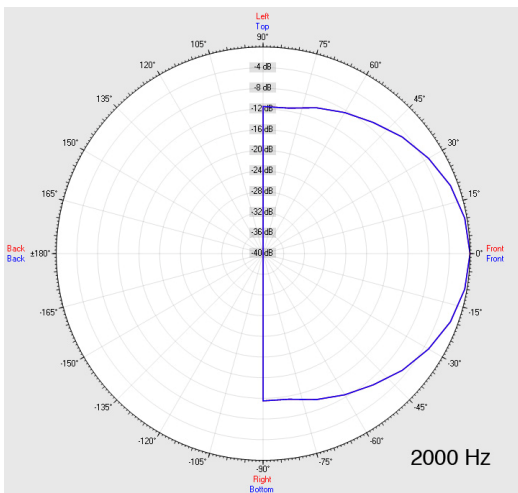
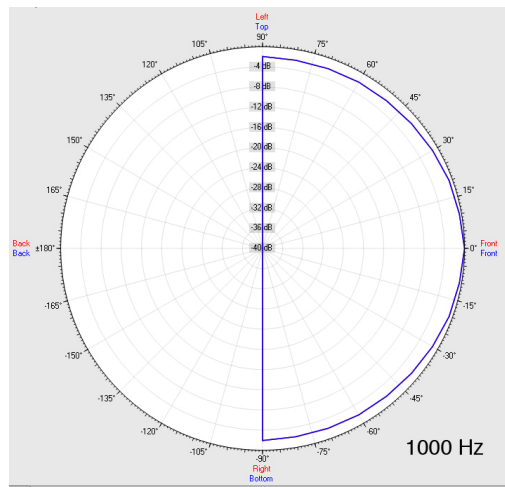
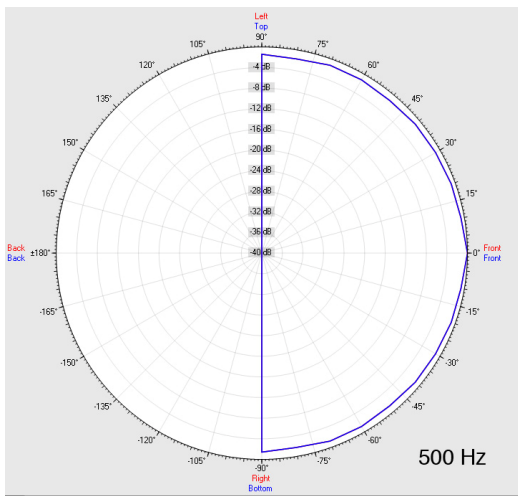
Source Data: D:\Strauch\Elko-Schmid\CLB22015\Daten\HOR\220FTHOR.POX

Copyright by Four-Audio GmbH & Co KG Licensed to AAC

Horizontal Isobars of: Elko-Schmid CLB-220F 10W



Parameters: Cyclic Move: 0° ; Symmetry: 0..+180 sym ; Freq.Smooth: 1/3 Oct ; Ang.Resol.: 5° ; Rel. to: 0° Axis 0°



CLB

220FT

10W

II VOIES

EN 5424

HAUTPARLEUR

PLAFOND