



**D
L
S**
220FT
**II
VOIES**
**20
WATT**
**EN
5424**

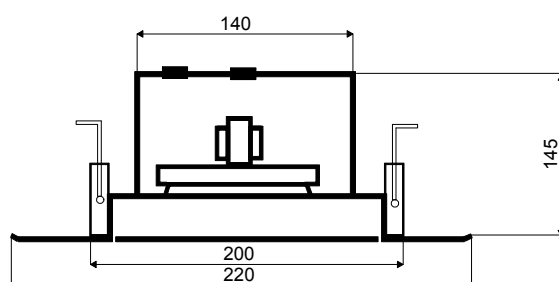
- HP A **2 VOIES** DE HAUTE QUALITE AUX APPLICATIONS SOPHISTIQUEES
- ANTIFEU
- **50-HZ-TRANSFO STABLE**
- ADAPTATION 100-V PROTEGEE
- VERSION EN-5424 NORME **DIN18032-III ANTI-CHOC** SALLES DE SPORTS
- **VERSION POUR ZONES HUMIDES** & DISPONIBLE EN COULEUR RAL STANDARD
- HP AVEC **BORNE CERAMIQUE** ET **THERMO-FUSIBLE** LIVRABLE EN OPTION
- **VERSION EN-5424 CERTIFIEE AVEC CAPOT ANTIFEU:**
NUMERO COMMANDE:

DLS-220FT/20W-II/EN-5424
NR-CERTIFICAT: 1293-CPD-0304

CARACTÉRISTIQUES TECHNIQUES:

DLS-220FT/20W-II/EN5424

Haut-parleurs:	30W-6,5" - 2 VOIES
Ligne 100V:	20-10-5W
Bande passante:	60 – 20.000 Hz
EN-Sensibilité 1W/4M:	74,40 dB
Pression acoustique max 20W/4M:	88,00 dB
Pression acoustique 1W/1M max EASE/Ulysses:	99 dB (4 KHz)
Pression acoustique 20W/1M max EASE/Ulysses:	112 dB (4 KHz)
Angle d'ouverture H (0,5/1/2/4 KHz):	180°/180°/122°/44°
Angle d'ouverture V (0,5/1/2/4 KHz):	180°/180°/122°/44°
Dimensions:	220 mm x 145 mm
Encastrement:	200 mm
Poids:	2,3 kg
Couleur:	RAL 9010, opt. Couleur RAL-Standard



EN-5424-PAGE-4-A

**H
A
U
T
P
A
R
L
E
U
R

P
L
A
F
O
N
D**

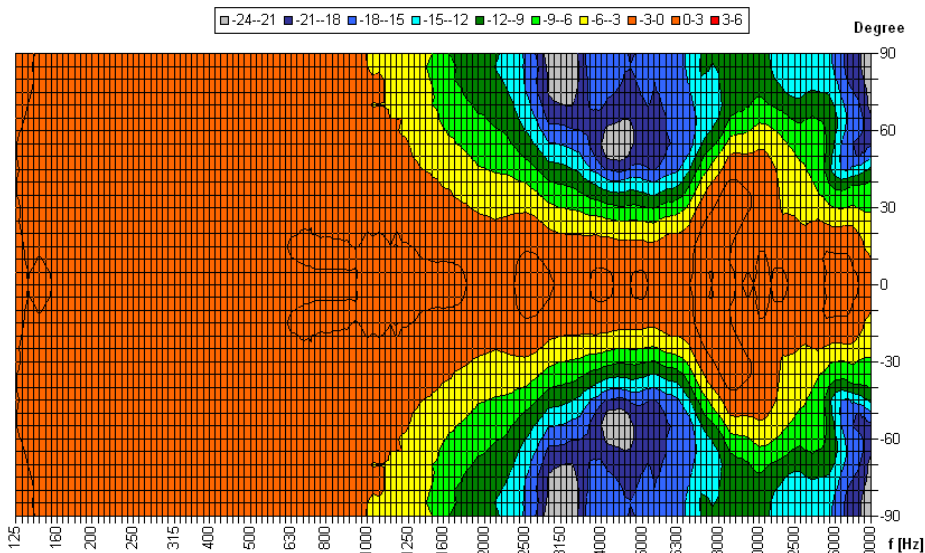
ANGLE D'OUVERTURE HP PLAFOND DLS-220FT-II-VOIES / 20 WATT / EN5424

Proc. de mesure	Axe	500Hz	1000Hz	2000Hz	4000Hz
EN5424	HOR	180°	180°	122°	44°
EN5424	VER	180°	180°	122°	44°
EASE/ULYSSES	HOR	180°	180°	90°	55°
EASE/ULYSSES	VER	180°	180°	90°	55°

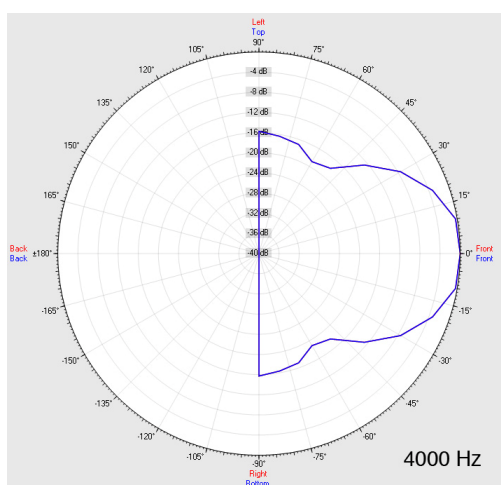
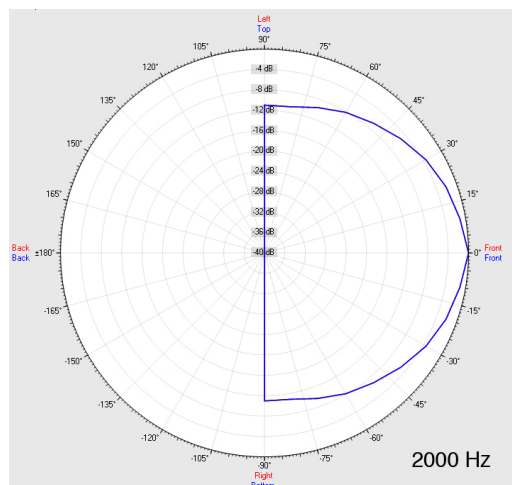
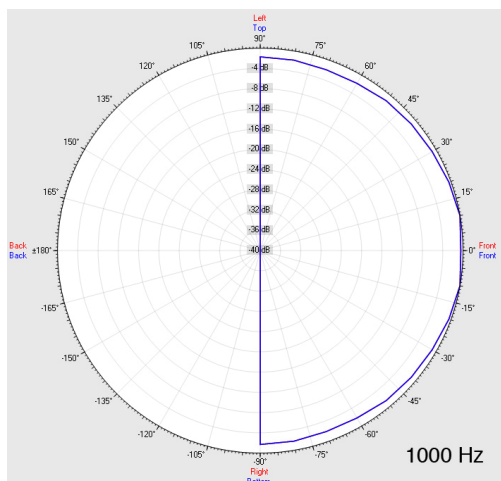
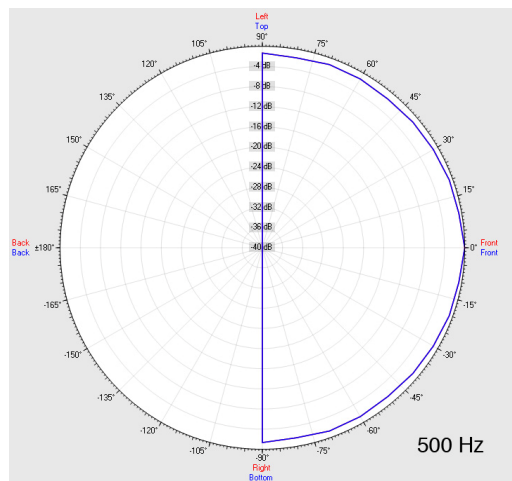
Source Data: D:\Strauch\Elko-Schmid\DL5220FDaten\Dummy.POX

Copyright by Four-Audio GmbH & Co KG Licensed to AAC

Horizontal Isobars of: Elko-Schmid DLS-220F-20W-II Fire pot



Parameters: Cyclic Move: 0° ; Symmetry: 0..+180 sym ; Freq Smooth: 1/3 Oct ; Ang. Resol.: 5° ; Rel. to: 0° Axis 0°



DLS
220FT

II
VOIES

20
WATT

EN
5424

H
A
U
T
P
A
R
L
E
U
R

P
L
A
F
O
N
D