

# 15W HP A CHAMBRE DE COMPRESSION ABS- VOICE-15T / EN5424

V  
O  
I  
C  
E

15T

EN  
5424

H  
P

A

C

H

A

M

B

R

E

D

E

C

O

M

P

R

S

I  
O  
N  
A  
B  
S



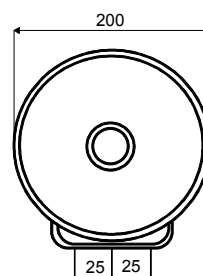
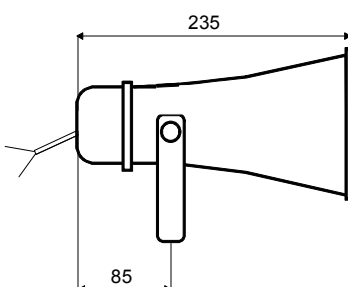
- EASE & ULYSSES-FICHER ETABLI PAR AUDIO & ACOUSTICS CONSULTING
- VIS EN ACIER INOXYDABLE V2A
- PROTECTION IP-66
- BOITIER ABS RESISTANT AUX INTEMPERIES
- REGLAGE PUISSANCE PAR COMMUTATEUR
- HP AVEC BORNIER CERAMIQUE ET THERMO-FUSIBLE LIVRABLE EN OPTION
- VIS SPECIALES DIN 912-ISO 4762

- VERSION VOICE-15T-EN-5424-CERTIFIEE:  
NUMERO COMMANDE:

VOICE-15T/EN-5424 (HP RESISTANT AUX INTEMPERIES CERTIFIEE TYPE-B)  
NR-CERTIFICAT: 1293-CPD-0248

## CARACTÉRISTIQUES TECHNIQUES: VOICE-15T/EN5424

Puissance nominale:	15 Watt
Ligne 100V:	15-7,5-3,75W
Bande passante:	320 - 8.000 Hz
EN-Sensibilité 1W/4M:	85,73 dB
EN-Pression acoustique max. 15W/4M:	103,8 dB
Pression acoustique 1W/1M max EASE/Ulysses:	110 dB (2 KHz)
Pression acoustique 15W/1M max EASE/Ulysses:	121,8 dB (2 KHz)
Angle d'ouverture H (0,5/1/2/4 KHz):	180°/110°/45°/18°
Angle d'ouverture H (0,5/1/2/4 KHz):	180°/110°/45°/18°
EN-Degré de protection:	EN-Type B, certifié pour une utilisation à l'extérieur (intempéries)
Dimensions:	200 mm x 235 mm
IP-Degré de protection:	IP 66
Poids:	1,3 kg
Couleur:	blanc / 9010



EN-5424-PAGE-25-A

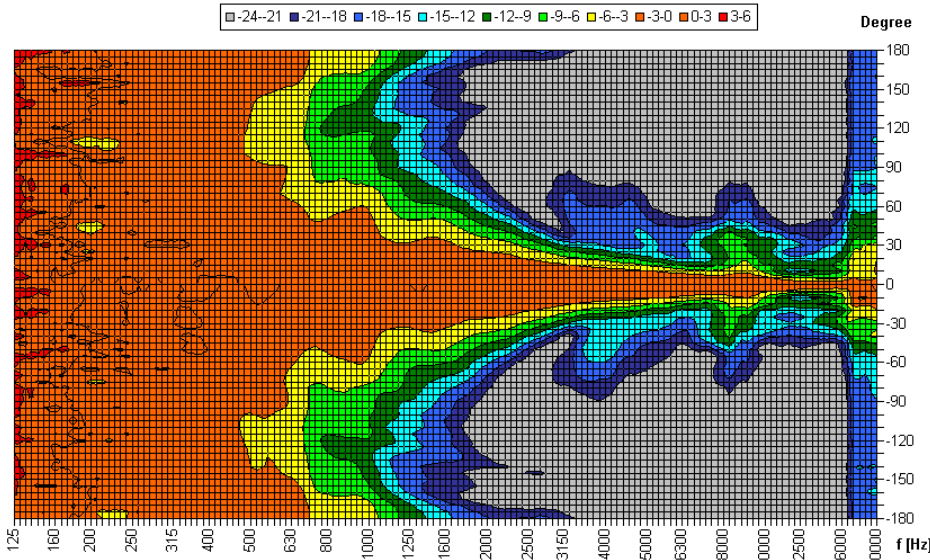
# ANGLE D'OUVERTURE 15W HP ABS- VOICE-15T / EN5424

Proc. de mesure	Axe	500Hz	1000Hz	2000Hz	4000Hz
EN5424	HOR	180°	110°	45°	18°
EN5424	VER	180°	110°	45°	18°
EASE/ULYSSES	HOR	360°	150°	75°	40°
EASE/ULYSSES	VER	360°	150°	75°	40°

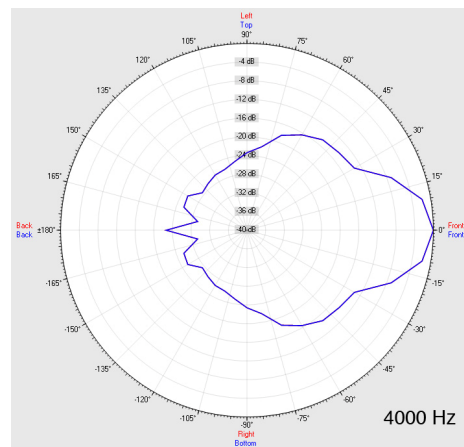
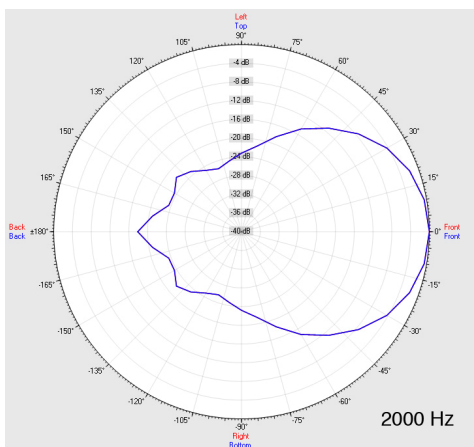
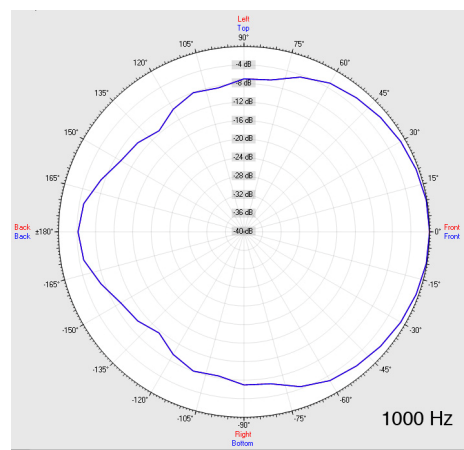
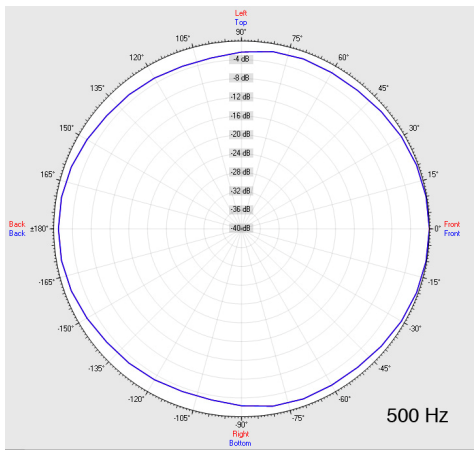
Source Data: E:\Daten\Elko-Schmid\VOICE15T\Daten\HOR\15T-HOR.POX

Copyright by Four-Audio GmbH & Co KG Licensed to AAC

Horizontal Isobars of: Elko-Schmid VOICE-15T



Parameters: Cyclic Move: 0° ; Symmetry: no symmetry ; Freq.Smooth: 1/3 Oct ; Ang.Resol: 5° ; Rel. to: 0° Axis 0°



VOICE  
15T

EN  
5424

H  
P  
A  
C  
H  
A  
M  
B  
R  
E  
D  
E  
C  
O  
M  
P  
R  
E  
S  
S  
I  
O  
N  
A  
B  
S