

SLB-220-FT/EN5424 220-MM x 100-MM / 10W & 6W-HP A ENCASTRER

S
L
B

220
FT

EN
5424

220
MM

H
P

D
E

P
L

A
F

O
N
D

A

E
N

C
A

S
T
R
E
R



- **ENTIEREMENT METAL RAL 9010**
- ENCASTREMENT **AVEC CAPOT ANTIFEU 100-MM**
- UTILISABLE EN **100V / 6-3-1,5W OU 10-6-3W**
- ADAPTATION **100-V PROTEGEE**
- VERSION EN-5424 **CERTIFIEE ANTICHOC NORME DIN 18032-3 EN OPTION**
- **50-HZ-TRANSFO STABLE**
- HP AVEC **BORNIER CERAMIQUE ET THERMO-FUSIBLE LIVRABLE EN OPTION**

- **VERSION SLB-220-STD/EN-5424-AVEC CAPOT ANTIFEU CERTIFIEE: NUMERO COMMANDE:**

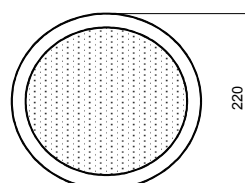
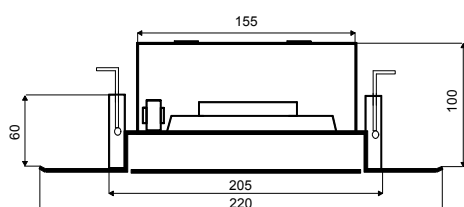
SLB-220-STD/EN-5424

NR-CERTIFICAT: 1293-CPR-0427

CARACTÉRISTIQUES TECHNIQUES:

SLB-220FT/EN5424

| | |
|--|---|
| Haut-parleurs: | 15W / 6,5"-Fullrange-Systeme avec cône HF |
| Ligne 100V: | 10-6-3-1,5W |
| Bande passante: | 90 – 18.000 Hz |
| EN-Sensibilité 1W/4M: | 77 dB |
| Pression acoustique max 10W/4M: | 92 dB |
| Pression acoustique 1W/1M max EASE/Ulysses: | 100 dB (2 & 3 KHz) |
| Pression acoustique 10W/1M max EASE/Ulysses: | 109 dB (2 & 3 KHz) |
| Angle d'ouverture H (0,5/1/2/4 KHz): | 180°/180°/162°/50° |
| Angle d'ouverture V (0,5/1/2/4 KHz): | 180°/180°/162°/50° |
| Dimensions: | 220 x 100-MM |
| Encastrement: | 205 mm |
| Poids: | 1,5 kg avec capot antifeu standard |
| Matériel: | Métal |
| Couleur: | RAL 9010 |



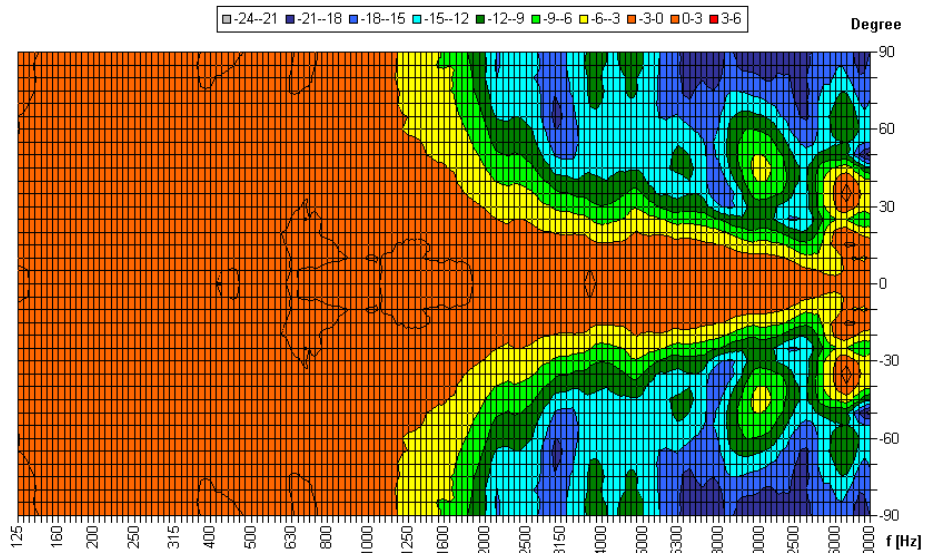
ANGLE D'OUVERTURE SLB-220-FT/EN5424 220-MM x 100-MM / 10W & 6W-HP

| Proc. de mesure | Axe | 500Hz | 1000Hz | 2000Hz | 4000Hz |
|-----------------|-----|-------|--------|--------|--------|
| EN5424 | HOR | 180° | 180° | 162° | 50° |
| EN5424 | VER | 180° | 180° | 162° | 50° |
| EASE/ULYSSES | HOR | 180° | 180° | 90° | 45° |
| EASE/ULYSSES | VER | 180° | 180° | 90° | 45° |

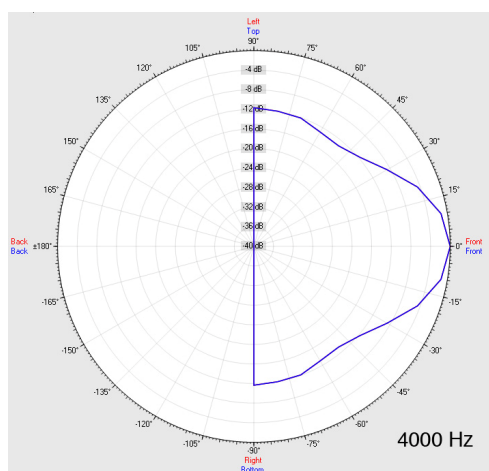
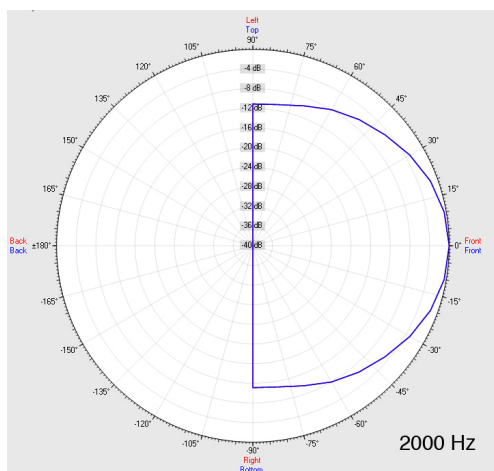
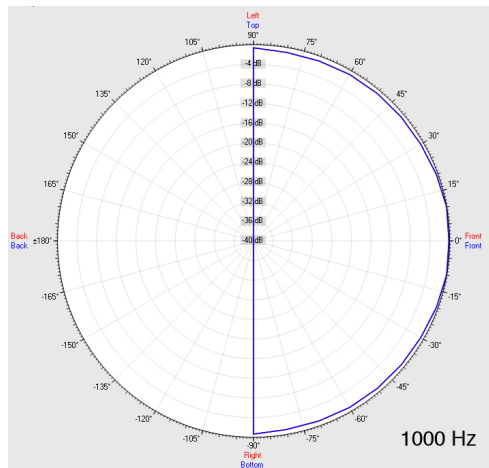
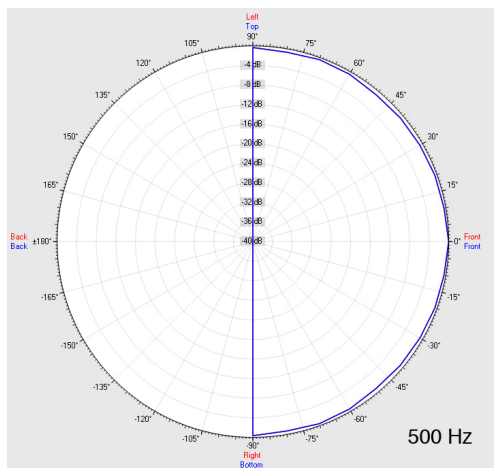
Source Data: E:\Daten\Elko-Schmid\SLB-220\Daten\Dummy.POX

Copyright by Four-Audio GmbH & Co KG. Licensed to AAC

Horizontal Isobars of: Elko-Schmid SLB-220



Parameters: Cyclic Move: 0° ; Symmetry: 0..+180 sym ; Freq.Smooth: 1/3 Oct ; Ang.Resol.: 5° ; Rel. to: 0° Axis 0°



SLB
220
FT
EN
5424
220
MM
HP
DE
PLAFOND
A
ENCAS
TRER